



FORT LAUDERDALE
LANDINGS

1515/1525 W. Cypress Creek Rd Fort Lauderdale, FL 33309



Accelerating success.



FORT LAUDERDALE LANDINGS

1515/1525 W. Cypress Creek Rd Fort Lauderdale, FL 33309

Leasing Team:

Jarred Goodstein

Executive Vice President

+1 954 652 4617


jarred.goodstein@colliers.com

Jonathan Kingsley

Vice Chairman

+1 954 652 4610

jonathan.kingsley@colliers.com



This document/email has been prepared by Colliers for advertising and general information only. Colliers makes no guarantees, representations or warranties of any kind, expressed or implied, regarding the information including, but not limited to, warranties of content, accuracy and reliability. Any interested party should undertake their own inquiries as to the accuracy of the information Colliers excludes unequivocally all inferred or implied terms, conditions and warranties arising out of this document and excludes all liability for loss and damages arising there from. This publication is the copyrighted property of Colliers and /or its licensor(s). © 2026. All rights reserved. This communication is not intended to cause or induce breach of an existing listing agreement. Colliers International Florida, LLC.

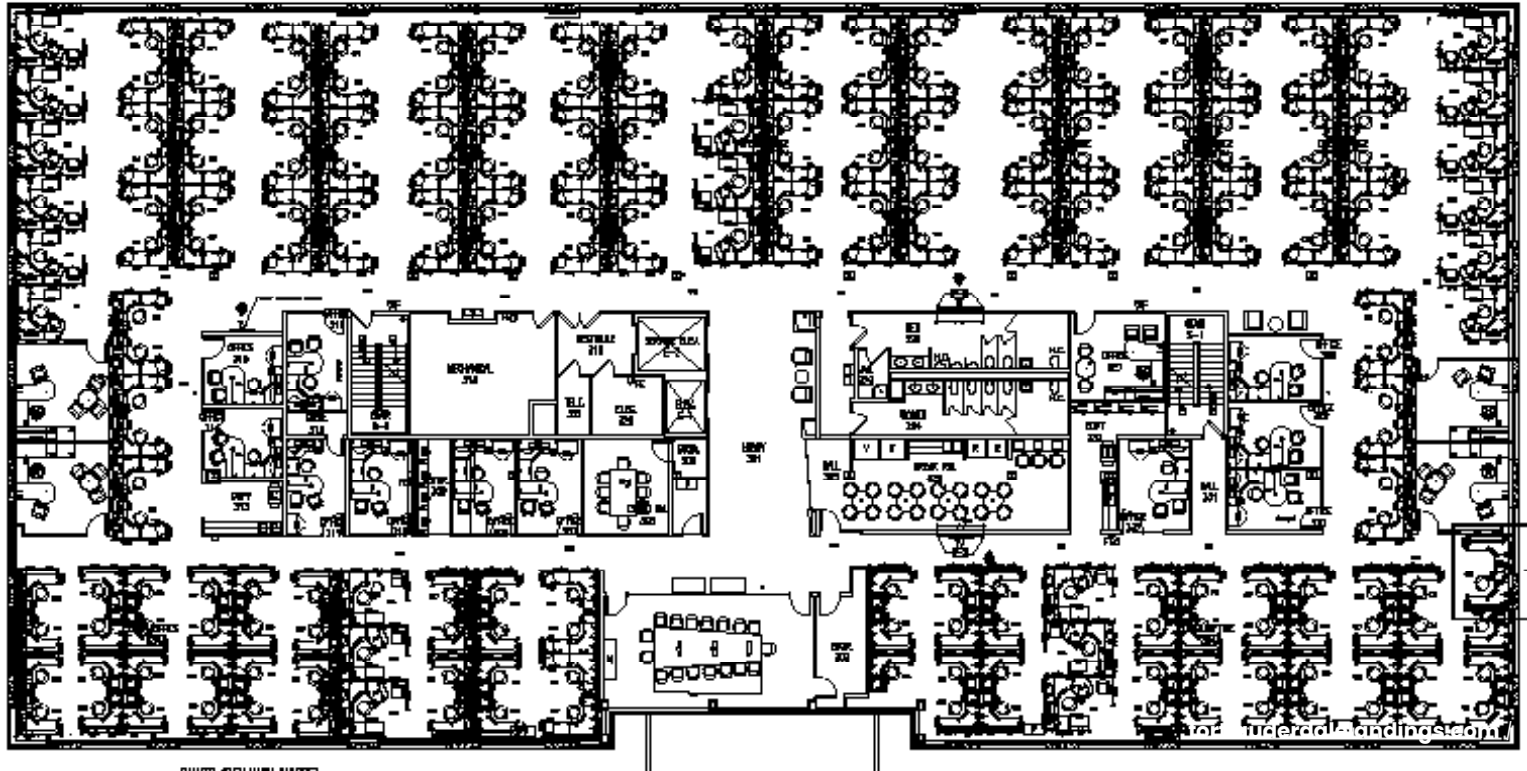


Property Overview

- » Class A office
- » Complete property renovation finished in 2019
- » 6.75:1,000 SF parking ratio
- » Structured parking available
- » Abundant natural light
- » Move-in ready - fully furnished spaces
- » 25,000 - 100,000 SF Available
- » Building Top and Monument Signage Available
- » Located in the Fort Lauderdale Airport Industrial Park
- » Only three minutes from Tri-Rail Cypress Creek Station
- » Electric vehicle (EV) charging stations
- » Brand new conference facility and fitness center
- » Full service on-site cafeteria

Typical Floor Plan

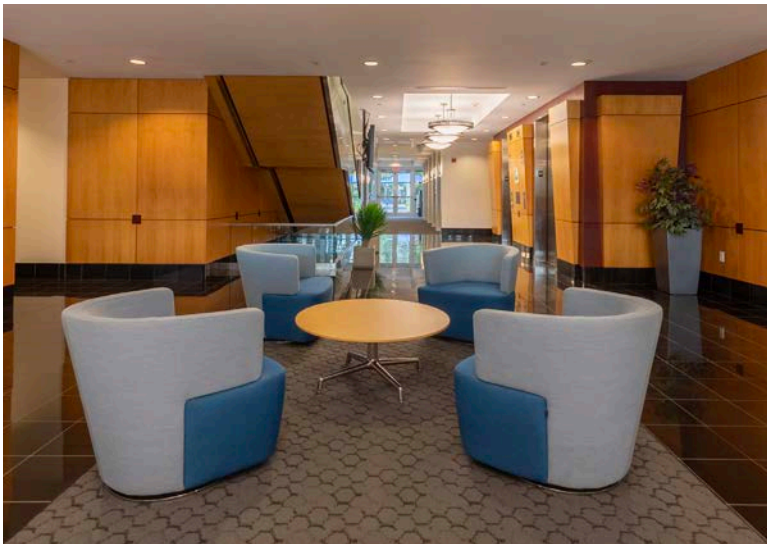
 View 3D Tours





Uninterrupted Functionality

- » 15,000 gallons of Diesel Fuel
- » New lightning protection system
- » New roof
- » Revamped cooling tower
- » Built to withstand greater than 120 mph winds for superior protection against strong winds and flying debris
- » Two massive generators for uninterrupted power supply during prolonged outages
- » Strategic location in flood zone X, a low-risk area, to minimize flood-related damage
- » Data center equipped with UPS battery backup for continuous operation and data integrity
- » Safeguarding the facility and its occupants from potential hazards and ensuring uninterrupted functionality.



The Perfect Location

Easily reachable, with convenient access to both highways and public transit options.



5 minutes



2 minutes



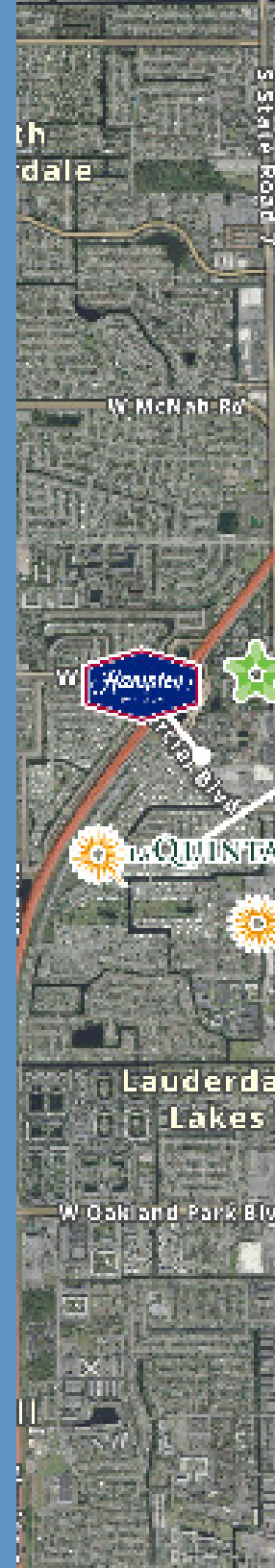
1 minute

Fort Lauderdale Executive Airport

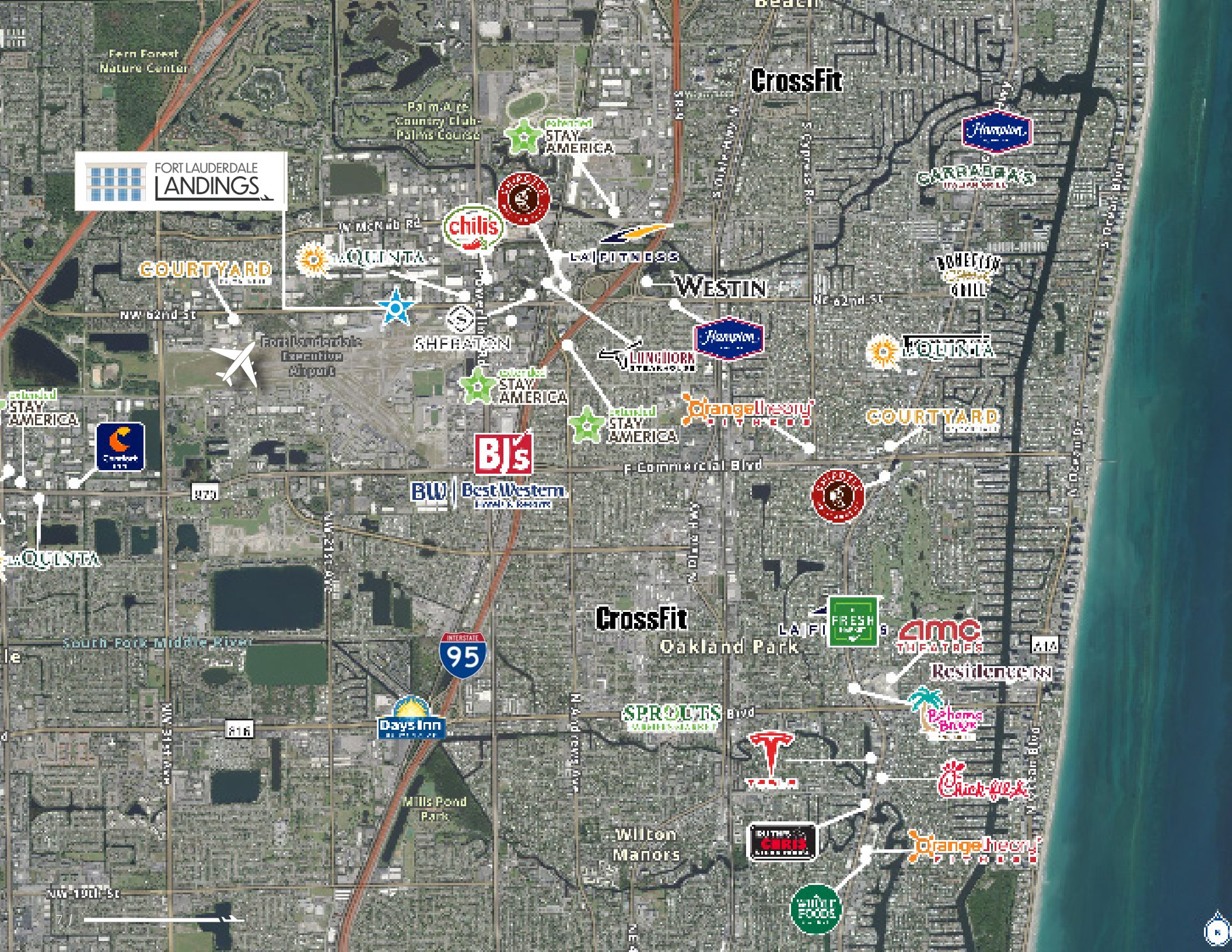


20 minutes

Fort Lauderdale International Airport



**FORT LAUDERDALE
LANDINGS**



COURTYARD
by Marriott

AQUINTA

chilis

LA FITNESS

WESTIN

HILTON GARDEN INN

BOHEMIAN
CUBAN RESTAURANT & BAR

SHERATON

LINGUINI
RESTAURANT

HILTON

AQUINTA

**extended
STAY
AMERICA**

**extended
STAY
AMERICA**

**Orange Theory
FITNESS**

COURTYARD
by Marriott

BJ's

BW Best Western
Lodging & Meetings

CrossFit

Oakland Park

FRESH
MARKET

**AMC
THEATRES**

Residence Inn

**SPROUTS
FARMERS MARKET**

Bahama Breeze

Days Inn

T. SWANSON

Chick-fil-A

**Wilton
Manors**

**BUTTER
CRISPS**

**Orange Theory
FITNESS**

**WILD
FOODS**

NW 100th St



Why Fort Lauderdale?



One of the Best Cities To Live in America

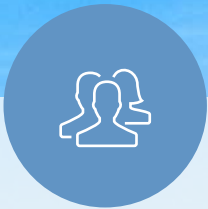
Recognized as one of the premier places to call home in the U.S., Fort Lauderdale stands out as a vibrant and diverse city boasting a 24-mile expanse of pristine coastline along the Atlantic Ocean, a rich tapestry of world-class dining and entertainment options, and a mosaic of 31 distinctive neighborhoods.

The economic landscape of Fort Lauderdale is flourishing, marked by robust growth in industries such as aviation, aerospace, financial services, global logistics, technology, and marine sectors. Careers within these thriving domains offer competitive annual salaries ranging from \$89,000 to \$150,000. Additionally, the Broward College Entrepreneurial Experience plays a pivotal role in nurturing entrepreneurship throughout the region.

**Yachting
Capital of the
World**

**At the Heart of
South Florida's
Rising Tech
Ecosystem**

**Affordable
Luxury Office
Market**



152,987

Current
Population



\$505 K

Median Home
Value



5%

Population
Growth (5 years)



44%

Bachelor's Degree
or Higher



65.4%

Daytime Populatio
(Workers)



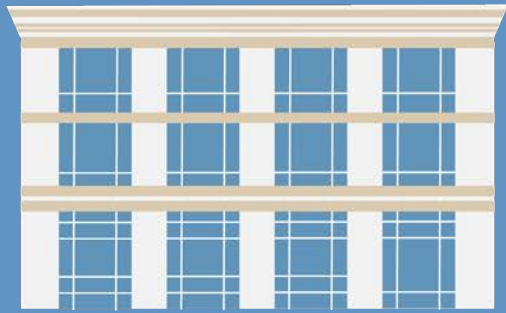
3.4%

Unemployment
Rate



\$75K

Median Household
Income



FORT LAUDERDALE LANDINGS

Contacts

Jarred Goodstein

Executive Vice President

+1 954 652 4617

jarred.goodstein@colliers.com

Jonathan Kingsley

Vice Chairman

+1 954 652 4610

jonathan.kingsley@colliers.com

This document/email has been prepared by Colliers for advertising and general information only. Colliers makes no guarantees, representations or warranties of any kind, expressed or implied, regarding the information including, but not limited to, warranties of content, accuracy and reliability. Any interested party should undertake their own inquiries as to the accuracy of the information Colliers excludes unequivocally all inferred or implied terms, conditions and warranties arising out of this document and excludes all liability for loss and damages arising there from. This publication is the copyrighted property of Colliers and /or its licensor(s). © 2026. All rights reserved. This communication is not intended to cause or induce breach of an existing listing agreement. Colliers International Florida, LLC.

